



Partnering with X2

X2 Logistics Networks

Dynamic and Professional Independent Freight Forwarders
Working Together as One

x2logisticsnetworks.com

What is X2 Logistics Networks?

X2 Logistics Networks is composed of multiple groups of global logistics professionals and independent freight forwarders who are experts in their fields and specialties.

The members of X2 Logistics Networks represent major sea and airports around the world and across different industry sectors. X2 Logistics Networks is the world's most professional freight forwarding network and one of the only groups who believe in the quality of members, and not the quantity. This philosophy ensures the existence of a strong and thriving network.

X2 Logistics Networks members are heavily vetted professionals that have demonstrated their commitment to providing the best possible service to meet and exceed customer requirements. The companies of X2 Logistics Networks specialise in providing comprehensive and competitive logistics solutions around the world.

The member organisations of X2 Logistics Networks benefit from:

- ✓ Professional and Vetted Global Freight Forwarding Partners
- ✓ Financial Protection
- ✓ Limited Membership per Market
- ✓ Free PR/Marketing Opportunities and Services
- ✓ X2's Partner Programme of Leading Suppliers and Vendors
- ✓ Cutting Edge Technology Platforms
- ✓ Global, Frequent Meeting Opportunities



About Us

X2 Logistics Networks are the premier networks of independent logistics and freight professionals representing major air and seaports around the world. It's also the world's most professional freight forwarding network. We pride ourselves on the professional quality of our membership.

All companies within the group understand the unique requirements of their customers and all are able to provide comprehensive and competitive logistics solutions in all major markets around the world. A truly global coverage.

X2 Logistics Networks is dedicated to growing a professional community of reliable and capable logistics experts and is actively pushing to further develop our networks and assist members for the greater benefit of one another. With our vision to commercially develop and manage a dynamic group, we aim to deliver a true ROI to our members.

The X2 Team is continuously improving the network and in turn the benefits reaped by our members. X2 stays on the cutting edge of technology and industry

trends so you don't have to. Our team and management has more than 50 years of combined logistics experience and is capable of conversing in more than 15 different languages whilst bringing with them the experience and skills acquired from a wide range of business development and networking experience positions needed to run an effective global platform.



684

MEMBERS

132

COUNTRIES

374

CITIES

998

OFFICES

X2 Member Benefits



Trusted and Professional Freight Forwarding Partners



Financial Protection



Limited Membership Per Market



Free PR/Marketing Opportunities and Services



Professional Assistance with Business Development



Participate in the Annual X2 Conference



Strategic Partnerships



24/7 Customer Service Support



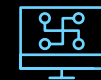
Exclusive Access to Members



Professional and Active Management Team



Quote System Exclusive to Members



Exclusive Tools to Increase Member Interaction



X2 Elite

Are you a freight forwarder seeking reliability, expertise and strong partnerships?
If yes, the professional members of X2 Elite are capable of meeting your needs.

The directive of X2 Elite is to create a dynamic group of professional freight forwarders. A network of selected members who cooperate under professional standards, actively promote and support each other in the handling of profitable freight forwarding, logistics, customs brokerage and related services by working as a collective group and driving a global branding culture that will allow for further global opportunities. X2 Elite will direct and assist members with the relevant capabilities to meet their customer's requirements and to support in effectively competing with MNC's using innovative marketing and other related service initiatives.

245

MEMBERS

111

COUNTRIES

250

CITIES

402

OFFICES



Door to Door Delivery



Port to Port Services



LCL Consolidation



Customs Clearance



Warehousing and Distribution



Documentation Services

[Click here to visit](#)

X2 Elite

X2 Projects

Are you a freight forwarder seeking reliability, expertise and strong partnerships?
If yes, the professional members of X2 Projects are capable of meeting your needs.

X2 Projects is a premium, global agent network of professional project cargo freight forwarders and logistics companies. All partners in X2 Projects have a proven track record in commercial, military and/or government project-related activity and demonstrate a complete commitment to providing clients and fellow partners with an excellence of service. X2 Projects will direct and assist members with the relevant capabilities to meet their customer's requirements and to support in effectively competing with MNC's using innovative marketing, related service initiatives, working as a collective group and driving a global branding culture that will allow for further global opportunities.

90

MEMBERS

53

COUNTRIES

79

CITIES

105

OFFICES



Heavy Lift Cargo



RORO



Break Bulk Cargo



Oil & Gas



Import and Export



OOG Transportation

[Click here to visit](#)

X2 Projects



X2 Cold Chain

Are you a freight forwarder seeking reliability, expertise and strong partnerships?
If yes, the professional members of X2 Cold Chain are capable of meeting your needs.

X2 Cold Chain is a leading temperature-sensitive global agent network that is compiled of dedicated personnel fully versed in the handling of pharmaceutical and perishable cargo. Our members help to ensure the end user, ultimately, the patient, remain first and foremost in their thoughts. X2 Cold Chain will direct and assist members with the relevant capabilities to meet their customer's requirements and to support in effectively competing with MNC's using innovative marketing, related service initiatives, working as a collective group and driving a global branding culture that will allow for further global opportunities.



Pharmaceuticals



Perishables



Sensitive Equipment



Fast Arrival of Fresh goods



LCL Temperature Consolidation



Complete Climate Control

46

MEMBERS

48

COUNTRIES

72

CITIES

77

OFFICES

[Click here to visit](#)

[X2 Cold Chain](#)



X2 Critical

Are you a freight forwarder seeking reliability, expertise and strong partnerships?
If yes, the professional members of X2 Critical are capable of meeting your needs.

X2 Critical is an exclusive, global agent network of dedicated personnel fully versed in the special handling of time critical movements and provide a professional and consistent time critical logistics management service. Our members can provide a full range of services with superior handling quality that is expected of time critical shipments. X2 Critical will direct and assist members with the relevant capabilities to meet their customer's requirements and to support in effectively competing with MNC's using innovative marketing, related service initiatives, working as a collective group and driving a global branding culture that will allow for further global opportunities.



24/7



AOG



Tailor Made Solutions



Next Flight Out



Warehouse and Distribution



Hand Carry/OBC

45

MEMBERS

42

COUNTRIES

63

CITIES

67

OFFICES

[Click here to visit](#)

[X2 Critical](#)



X2 Asia Global

Are you a freight forwarder seeking reliability, expertise and strong partnerships?
If yes, the professional members of X2 Asia Global are capable of meeting your needs.

The directive of X2 Asia Global is to create a dynamic group of professional freight forwarders. A network of selected members who cooperate under professional standards, actively promote and support each other in the handling of profitable freight forwarding, logistics, customs brokerage and related services by working as a collective group and driving a global branding culture that will allow for further global opportunities. X2 Asia Global will direct and assist members with the relevant capabilities to meet their customer's requirements and to support in effectively competing with MNC's using innovative marketing and other related service initiatives.



Door to Door Delivery



Port to Port Services



LCL Consolidation



Customs Clearance



Warehousing and Distribution



Documentation Services

130

MEMBERS

75

COUNTRIES

110

CITIES

168

OFFICES

Click here to visit

[X2 Asia Global](#)



X2 Movers

Are you a freight forwarder seeking reliability, expertise and strong partnerships?
If yes, the professional members of X2 Movers are capable of meeting your needs.

X2 Movers enables every member company to offer fully-integrated relocation services to customers regionally and globally. A network of selected members who cooperate under professional standards, actively promote a culture by working as a collective group and driving that will allow for further global opportunities. X2 Movers is unique amongst the groups that make the composition of X2 Logistics Networks. The synergy that exists between relocations and freight forwarders creates a valuable business conduit within the group.



International & Domestic Relocation



Consulting



LCL Consolidation



Customs Clearance



Storage and Warehousing



Custom Clearance

128

MEMBERS

84

COUNTRIES

145

CITIES

179

OFFICES

[Click here to visit](#)

[X2 Movers](#)

X2 e-Commerce

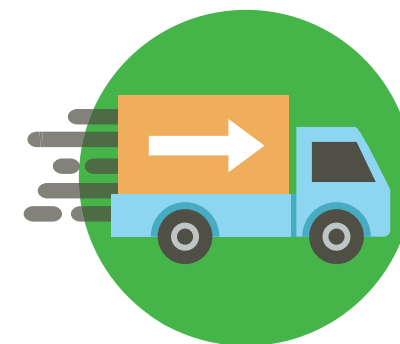
What is X2 e-Commerce?

X2 e-Commerce is a neutral platform that enables you the opportunity to develop your products, locate partners and identify new customers. You are also able to offer your services through a fully integrated global solution.



X2 e-Commerce ensures every company is fully equipped and prepared to offer high-quality solutions to partners, shippers and e-Tailers within the group.

If your company is already involved in cross-border e-Commerce and you want to learn more about this exciting high growth market set to dominate the industry over the coming years, you can benefit by becoming an X2 e-Commerce member.



Frequently asked questions

▶ **Does the annual X2 membership fee include financial protection? What is the coverage?**

X2 members are financially protected up to 25,000 USD per transaction between network participants and \$100,000 collectively across the course of the year.

▶ **What is the membership limit per region?**

X2 limits the amount of members per market to ensure every member gets their equal share of cargo within the network. This is determined by the size of the market and the trade within that specific country.

▶ **X2 offers PR and marketing services, what can we expect from X2?**

X2 offers multiple forms of support within PR and Marketing not only through our internal Members News, Bulletins & Social media platforms but also in various media outlets. This allows you to reach more inter-network members and also new external clients for your business.

▶ **There are multiple vertical networks within X2, if I join 1 network does this give me access to all of X2 Logistics Networks?**

X2 is made up of 6 categories Elite, Projects, Cold Chain, Critical, Asia Global & Movers. Each network is completely separate with a different group of members and their own respective membership fee.

▶ **How do you qualify “Trusted and professional global freight forwarding partners” within X2?**

Each prospective member company is required to submit strong commercial references to satisfy the requirements of the management of X2.

It is imperative for you to prove your expertise in your local markets and ensure that you have a positive reputation with other agents and carriers as well as that your company has professional leadership with integrity in order to be enrolled.

▶ **Is X2 built up of sea freight specialists or air freight specialists?**

X2 is built up of a number of great companies who all have their own identities within their specific markets. All members can undertake both modes of transport but their strong point will come down to their geographical & market location.

▶ **Are your members’ details made public and can non-members gain access to X2 member’s details?**

The members area is only accessible for members, however if you do have any questions about specific members in certain markets the X2 team will be happy to advise on the current market status.

▶ **May a company list multiple locations with X2 Logistics Networks?**

X2 does accept multiple offices from prospective members this does come at a surcharge per additional office and fall down to availability within that specific market.

▶ **Is it mandatory to attend the annual conference?**

It isn’t mandatory to attend the X2 annual conference however meeting with the members will only garner better long term results by meeting face to face. Failure to attend more than 3 consecutive conferences will leave your renewal under scrutiny from the X2 management.



X2 Pay

Save Your Money Save Your Time

X2 Pay is the easiest to use company-to-company financial transaction system that eliminates fees and saves thousands of dollars, euros, and pounds in banking fees.

X2 Pay was developed by X2 Logistics Networks for exclusive use by its X2 Logistics Networks members. Members can send and receive money instantly. With our mobile site it can be accessed from anywhere with a data connection, whilst protecting you completely from the growing and ever present threat of fraudulent behavior.

Boost profit margins and eliminate banking fees with the safe and secure X2 Pay system. System access is available to all X2 members at no additional cost.

Setup is easy, the process is transparent, X2 Pay is the preferred payment method for X2 members.



The future is safer and cheaper. The future is X2 Pay.



X2 Freight

X2 Logistics Marketplace

Instant Freight Quotes for Faster Shipping between X2 members only.

FREIGHT RATE

Easily find partner rates to determine who might be best suited to meet the needs of you and your client. See only the rates relevant to your specified search criteria.

BUSINESS STRATEGY

Use X2 Freight as a tool to plan ahead and proactively identify potential partners before you need them for a shipment. X2 Freight is both an instant search and planning tool.



FREIGHT COST

Identify costs and determine what solutions might work best for you.

Don't be surprised or caught off guard by partner rates.

Identify your costs in advance before initial contact.

The screenshot displays the X2 Freight web application interface. At the top, there is a navigation bar with the X2 Freight logo and links for HOME, RATE REQUESTS, EVENTS, CONTACT US, and LOGIN. Below the navigation bar are several icons representing different actions: NEW RATE REQUEST, SHOW ALL REQUESTS, REQUESTS RECEIVED, REQUESTS ACCEPTED, RATES RECEIVED, REQUESTS DECLINED, and HELP FAQ.

The main content area is divided into two sections: "New Requests" and "Accepted Requests". Both sections show a detailed view of a request for a shipment from Italy to Bangkok. The "New Requests" section includes a "DECLINE" button and an "ACCEPT" button. The "Accepted Requests" section includes a "DECLINE" button.

Below the request details, there is a section for "Online Bookings" with the tagline "Have Never Been so Easy!". This section lists several benefits: Request Rates, Compare Rates, Book Shipment, and Save Time & Money.



X2 Cargo Protect

Reduce your financial
RISK EXPOSURE

What is X2 Cargo Protect?

X2 Cargo Protect is an all-risk insurance (Institute Cargo Clauses A including war and strike clauses) designed to cover any kind of cargo shipped. It covers standard commodities against accidents and mishandling as well as other unfortunate incident.

X2 Cargo Protect is designed to fit your individual needs and cargo. Thanks to our very specialised knowledge we may offer specific cover for pharma products, logistics, drinks or food, perishable, and many other types of commodities.

Why choose X2 Cargo Protect?

X2 Cargo Protect is offered at highly favorable rates backed by top rated insurance companies. Our coverage is calculated to provide coverage equivalent to full value + freight + 10% (for additional expenses).

We offer best in class claims services through our global network of specialised yet centralised centres. We target a maximum of 30 days claim resolution (providing that documents are available to process your claim).

Besides those advantages, X2 Cargo Protect is your best protection against financial loss, never-ending claims discussions and legal disputes.

All Risk Coverage

Such coverage provides extensive protection against damage or loss due to external factors. At the difference of a more limited coverage, it will for example, protect the shipper against:



Pilferage



Heavy weather



Leakage



Breakage

Although the above perils are covered under some “All Risks” policies, there are exclusions under all risk coverage which may apply, in particular:



Improper packing



Rejection of goods by customs



Inherent vice

X2 Cargo Protect is a product developed by NACORA Insurance Brokers. The content presented here is for general information only. We recommend that you seek professional advice to answer specific questions on insurance options.

powered by

NACORA
International Insurance Brokers
www.nacora.com



X2 Vendors

Connect your business instantly to over 1000 registered X2 Logistics Networks offices through X2 Vendors.

What is X2 Vendors?

X2 Vendors are allowed special access to the full X2 Logistics Networks membership. As a recognized service provider you can showcase your company, your products and capabilities to an audience who understands exactly what you are offering.

X2 members can extract extra value from their membership through X2 Vendors when they choose to take advantage of the services provided by our carefully selected X2 Vendors partners.

X2 Logistics Networks has 1080 Member Offices in 163 Countries in 403 Cities worldwide.

As a member, attend the X2 Annual Conference and other events throughout the year and around the globe.

NACORA

International Insurance Brokers

Nacora is an independent commercial insurance broker specializing in the provision of risk consulting and commercial (marine and non-marine) insurance solutions, products and services.



Softlink Global is a leading software provider for Freight Forwarding, Logistics and Supply Chain industry. Their comprehensive product portfolio includes superior technology solutions for strategic and operational aspects of logistics business.



ConsolFreight takes pride in offering freight forwarders only the most reliable consolidators for any given trade lane. That's why consolidators can only join the platform by invitation. Connect with us to find out more about how to become a part of this platform.



BoxTop Technologies is an innovative leader in the provision of freight management and supply chain software, providing technical solutions designed specifically for international freight forwarders and logistics provider.

X2 Global Media



**X2 Global Media brings a fresh energy to its creations.
Our purpose is to help guide your brand write its own unique story.**

Inspired Website Creation

An elegant, simple, and user-friendly website is just a few clicks away from becoming a reality. Be proud of your brand, entice new business, look professional, and above all, succeed with our tailor-made digital solutions.



Cutting Edge Event Collateral

The trade show, the exhibition, the conference... All necessary requirements to build new relationships, cement old ones, and to encourage business growth. In an environment where standing out from the crowd is of paramount importance, our Event Specialists can help with every aspect of ensuring your brand is represented as it should be, and rises above the competition time and time again.



Innovative Graphic Design

Creative marketing is the key to opening up numerous unexplored avenues in today's cut-throat marketplaces. How you present your image is everything. Our full range of graphic design services will enable your message to stand out to the right people in the right way.



Websites



Logos



Brochures



Letterheads



Business Cards





One Monocle

Networking, event management, and team building has formed the foundation of One Monocle and those activities continue to be the focus of our business.

Client Happiness is Our Top Priority

One Monocle is the home of X2 Group's event planners and managers. The One Monocle team has planned, organised, and managed well over 200 events over the course of their careers. Our team can handle equally well both small single day events or large events with international guests and exhibitors that are held over multiple days. Our team strives to make each event unique unto itself. It's our belief that there really isn't a "one size fits all" method of event planning and management. That's why all One Monocle managed events that, although will carry your branding, will be infused with One Monocle's flair for the unique and memorable.



Event Management



Team Building



Advisory Services

Our personally tailored events are capable of covering a broad spectrum of feelings and moods, even during a single event. We have organised events that are serious, business focused, and strictly professional. However we have also organised events that have involved booze cruises, dinners on a beach, and after-event dance parties with samba dancers and lasers. We can certainly match the needs of almost any group event. On a smaller scale we are adept at planning and hosting single day team building events for small to medium companies as well as corporates. If you have an event and are seeking support to make your vision a reality, send us a message.





SOFTLINK
Simplifying Operations
www.softlinkglobal.com
Logistics IT Specialist

AIR FREIGHT

SEA FREIGHT

LAND FREIGHT

TRANSPORT MANAGEMENT

WAREHOUSE MANAGEMENT

CFS

ONLINE TRACKING

DAILY STATUS REPORT (DSR)

INVOICE / DEBIT NOTE

FINANCIAL ACCOUNTING

TAX COMPLIANCE / RETURNS

MOBILE APPS

MULTI-CURRENCY / MULTI-COUNTRY

MARKETING / SALES

ALERTS & NOTIFICATIONS

APPROVAL SYSTEM

ENQUIRY

QUOTATION

ERP FOR FREIGHT FORWARDERS & LOGISTICS



Logi-Sys

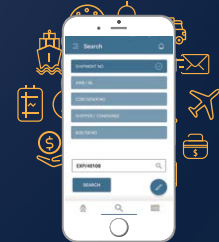
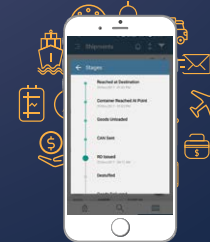
**LEAD
MANAGEMENT**

**EASY
TO USE**

DASHBOARD

**CUSTOMER
NOTIFICATION**

TRACKING





COLLABORATIVE CARGO CONSOLIDATION

ConsolSmart

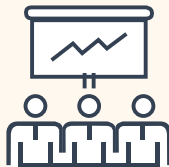
This patent pending technology uses several complex algorithms to provide all members with savings and efficiency.



Instant Quote



Contract Management



CRM



Track and Trace



Pay Wall



Automated Sales Generator



Internal communication



Cargo Insurance

Pricing and Plans

- Management Dashboard
- Tradeline Search
- Instant Booking
- Contract Management
- Quotation System
- Secure Payment
- Selling Insurance
- Shipment Trach and Trace
- Documentation Management
- Pick-up and Delivery Orders

smart
Freight Management Systems

simplifying the supply chain





+44 (0)20 8400 2000
contactus@boxtop.net

boxtop.net

boxtop
TECHNOLOGIES



 170/87 9th Floor Ocean Tower 1 Bldg,
New Rachadaphisek Road, Khlong Toey,
Bangkok, Thailand 10110

 + 66-2-648-6123

 info@x2logisticsnetworks.com

www.x2logisticsnetworks.com